

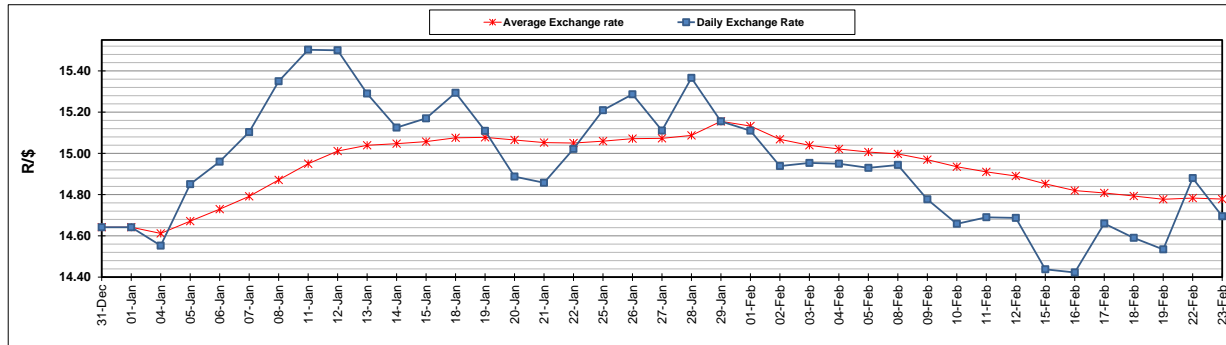
	PETROL 95 ULP	PETROL 93 ULP & LRP	DIESEL 0.05%	DIESEL 0.005%	ILL. PAR.
GAUTENG PUMP PRICE (SA c/l) AS FROM 03/02/2021	1,567.000	1,550.000	-	-	-
WHOLESALE PRICE (SA c/l) AS FROM 03/02/2021	-	-	1,358.420	1,360.820	798.688
SINGLE NATIONAL MAXIMUM RETAIL PRICE	-	-	-	-	1,008.000
BASIC FUEL PRICE - 23/02/2021 (SA c/l)	693.458	682.764	680.464	684.093	655.556
PRESS RELEASE CONTRIBUTION TO BFP 03/02/2021 - 23/02/2021 (SA c/l)	600.170	593.170	599.630	602.030	586.128
UNIT OVER/(UNDER) RECOVERY - 23/02/2021 (SA c/l)	(93.288)	(89.594)	(80.834)	(82.063)	(69.428)
AVERAGE BASIC FUEL PRICE 29/01/2021 - 23/02/2021	648.176	639.141	641.586	645.234	621.181
AVERAGE UNIT OVER/(UNDER) RECOVERY 29/01/2021 - 23/02/2021	(61.506)	(59.471)	(51.623)	(53.037)	(44.886)

ANALYSIS MOVEMENT OF AVERAGE OVER/(UNDER) RECOVERY

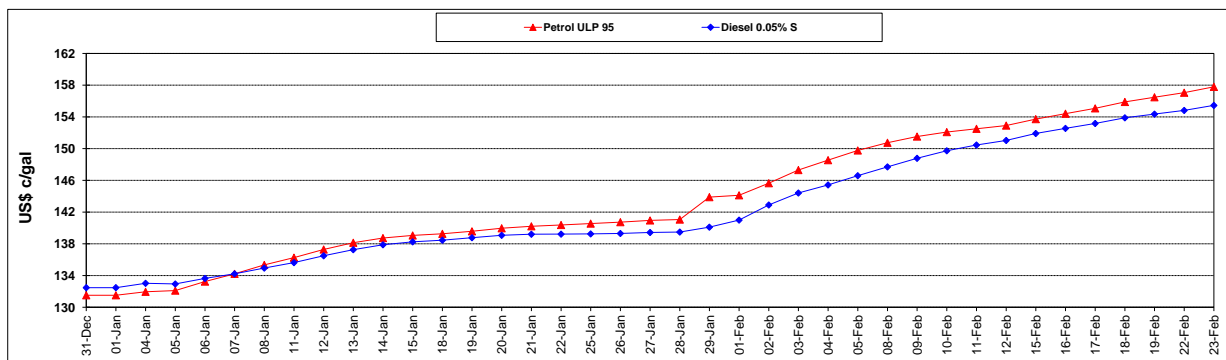
	PETROL 95	PETROL 93	DIESEL 0.05%	DIESEL 0.005%	ILL. PAR.
- MOVEMENT IN INTERNATIONAL PRODUCT PRICES	(75.041)	(72.817)	(65.020)	(66.510)	(57.857)
- MOVEMENT IN EXCHANGE RATE	13.535	13.346	13.397	13.473	12.971
AVERAGE UNIT OVER/(UNDER) RECOVERY 29/01/2021 - 23/02/2021	(61.506)	(59.471)	(51.623)	(53.037)	(44.886)

R/\$ EXCHANGE RATE - (R/\$14.6950 - 23/02/2021)

EXCHANGE RATE USED IN BASIC FUEL PRICE



INTERNATIONAL PRODUCT PRICES OF BASKET USED IN BASIC FUEL PRICE



BASIC FUEL PRICE IN SA CENTS PER LITRE

